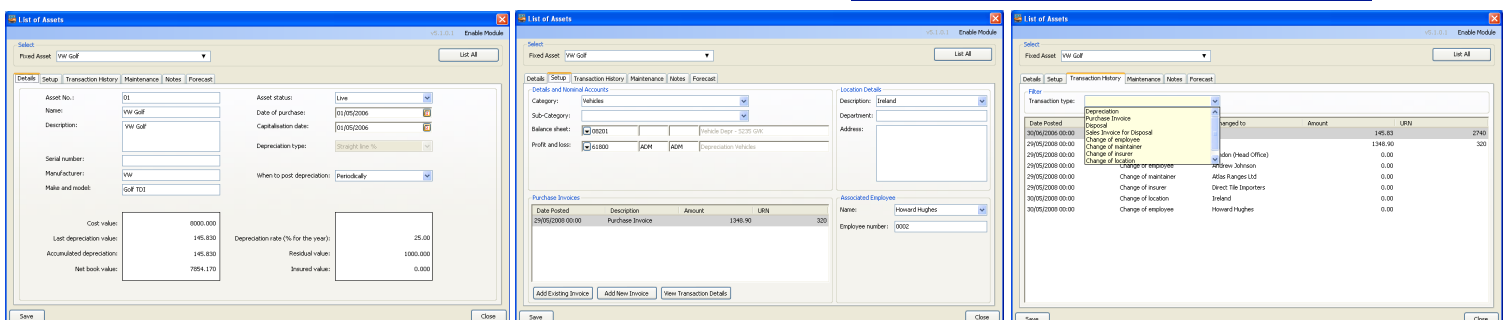
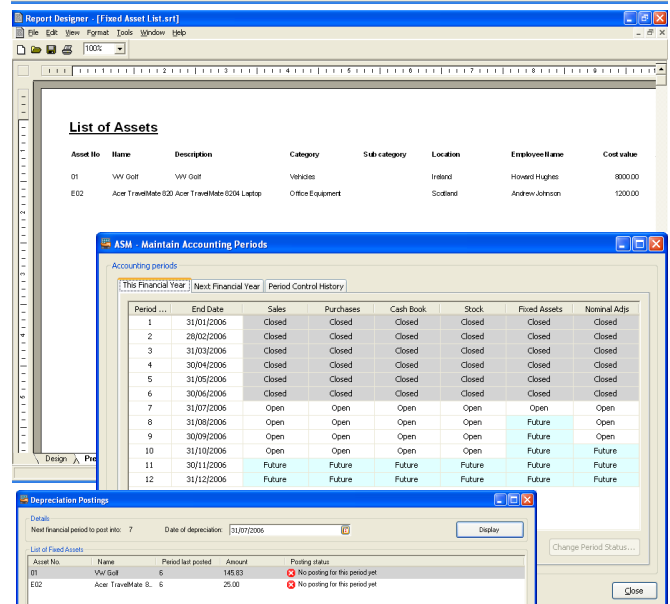
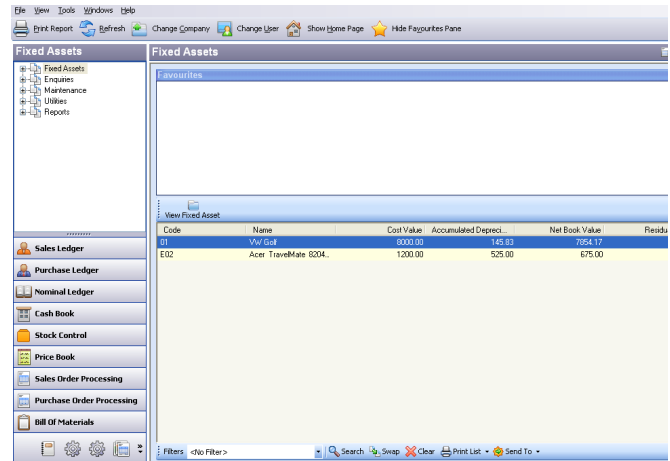


fixed assets for sage 200

Product Overview

Fixed assets is designed specifically as an additional module for Sage 200. Fully integrated with Sage 200 financial ledgers and with the standard sage report designer and list views, this is a simple module to use.

- Import Assets from Excel
 - conversion method for Sage Line 100 Fixed Assets systems
- Sage 200 menu structure for fixed assets included
 - group menu provided for custom menu design
- Period driven posting of depreciation
 - linked to Sage period end routine
 - posting to the nominal ledger
- Create assets from Purchase Ledger
 - as invoices are processed new assets can be added (optional)
- Record costs against existing assets
 - as invoices are processed link invoice to existing asset (optional)
- Standard depreciation methods supported
 - straight line, reducing balance, sum of digits
- Notes and attachments per asset
 - sage style notes and attachments can be added
- Integrates with Sage Project Accounting
 - depreciation postings can be made to projects
- User Defined Categories & Sub Categories
 - to improve category reporting
- Employee & Location Lists
- Transaction history
 - for postings to depreciation with drill down
- Change history
 - tracks changes of all fields such as employee, location
- Disposal of assets process
 - to help control disposal process and nominal postings
- Asset revaluation process
 - to help control revaluation process and nominal postings
- Reports are available in standard Sage report designer
 - reports are run in the normal way from Sage
 - reports can be amended in the report designer
 - new reports can be created using the new catalogue
- Forecast of depreciation postings
 - provides on screen report and output of nominal postings
 - groups by nominal code to help with budget update and import



To find out more about this product contact your Sage Business Partner